



Thank you for purchasing IVY.

What's in the box?

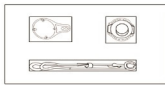
1. IVY attached to necklace metal fitting and necklace chain
2. Bracelet metal fitting
3. Leather Bracelet
4. Tool to open IVY
5. 2x CR2032 batteries

5



The top layer has IVY with necklace metal fitting and necklace chain attached to it already. You can take the top layer out completely and then take the chain out from the back and from the grooves at the corners. There is currently no battery inside IVY so the next step is to Add Battery.

2



In the bottom layer, you will find 2x CR2032 batteries, bracelet metal fitting, leather bracelet and tool to open IVY.

3



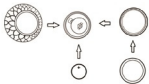
You have to open IVY to insert or replace battery, or to change from necklace to bracelet. The above picture shows how to open IVY using hand. Rotate anti-clockwise to open.

4



Or you can use the Tool to open IVY. Attach the tool on top of IVY (facing the stone) using the grooves on the side and then rotate anti-clockwise to open.

5



After IVY is open, put the battery where you see the battery contacts. Make sure the -ve side of battery is facing down and you can see the +ve side of the battery. After putting the battery, close the back cover either by hand or tool. Rotate clockwise to close.

In case necklace metal fitting came out while opening IVY, you can put it back in its slot. If water proofing rubber came out from inside back cover, you can put it inside before closing.

6



If you want to wear IVY as bracelet, the first thing to do is remove the necklace metal fitting and add bracelet metal fitting. Above picture shows how to do that. After putting the bracelet metal fitting, you can put the battery and close the back cover by hand or by tool.

7



And last thing is to attach the leather bracelet to bracelet metal fitting.

8

Updates, troubleshooting, assistance, safety instructions, warranty policy, specifications, compatibility and other info for your IVY can be found at www.getmyivy.com.

DESIGNED IN SINGAPORE.

MANUFACTURED IN TAIWAN.



© 2016 Smartfuture Pte Ltd. All rights reserved. IVY is registered trademark of Smartfuture Pte Ltd. All other trademarks are property of their respective owners.

International patents pending

SMARTFUTURE PTE LTD, #06-01,
178 Paya Lebar Road, Singapore 409030



GETTING STARTED